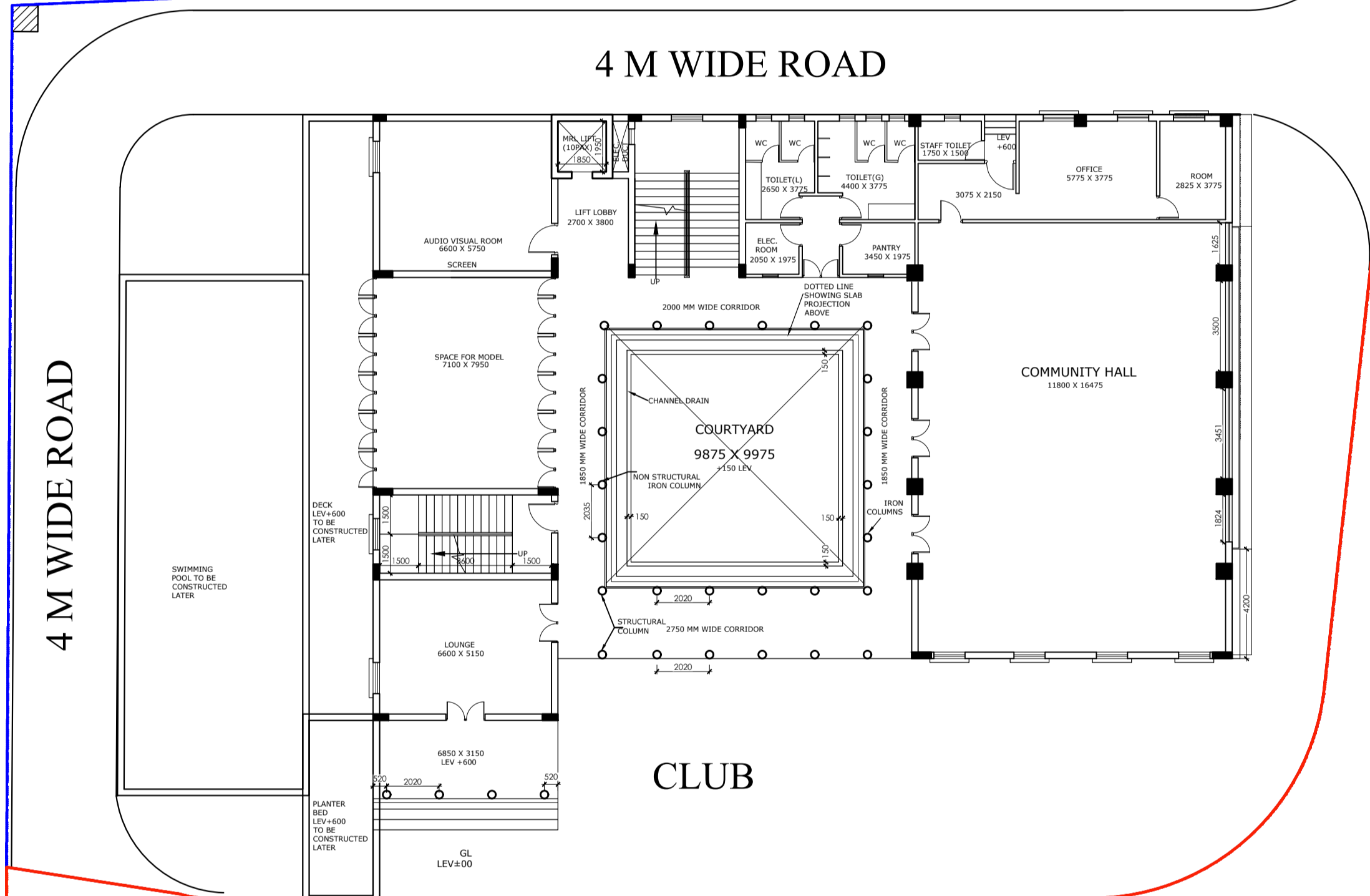


MADERHAT ROAD (8.541 M WIDE)
ENTRY
EXIT

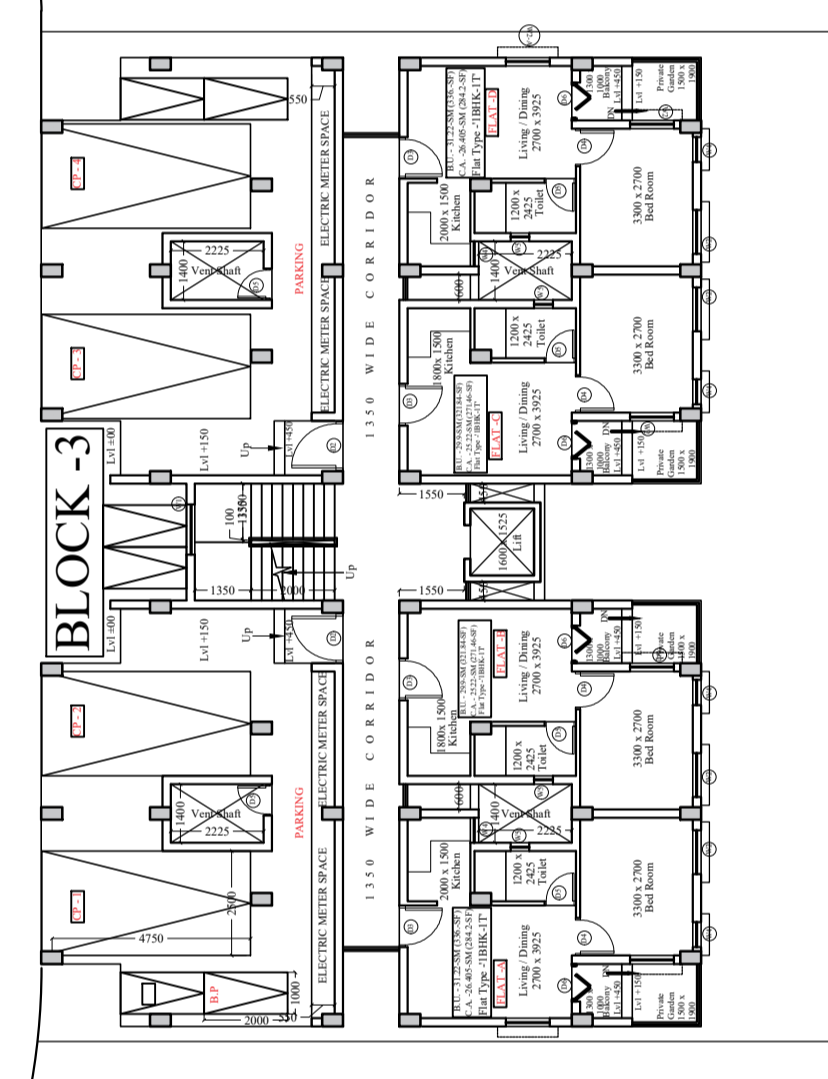
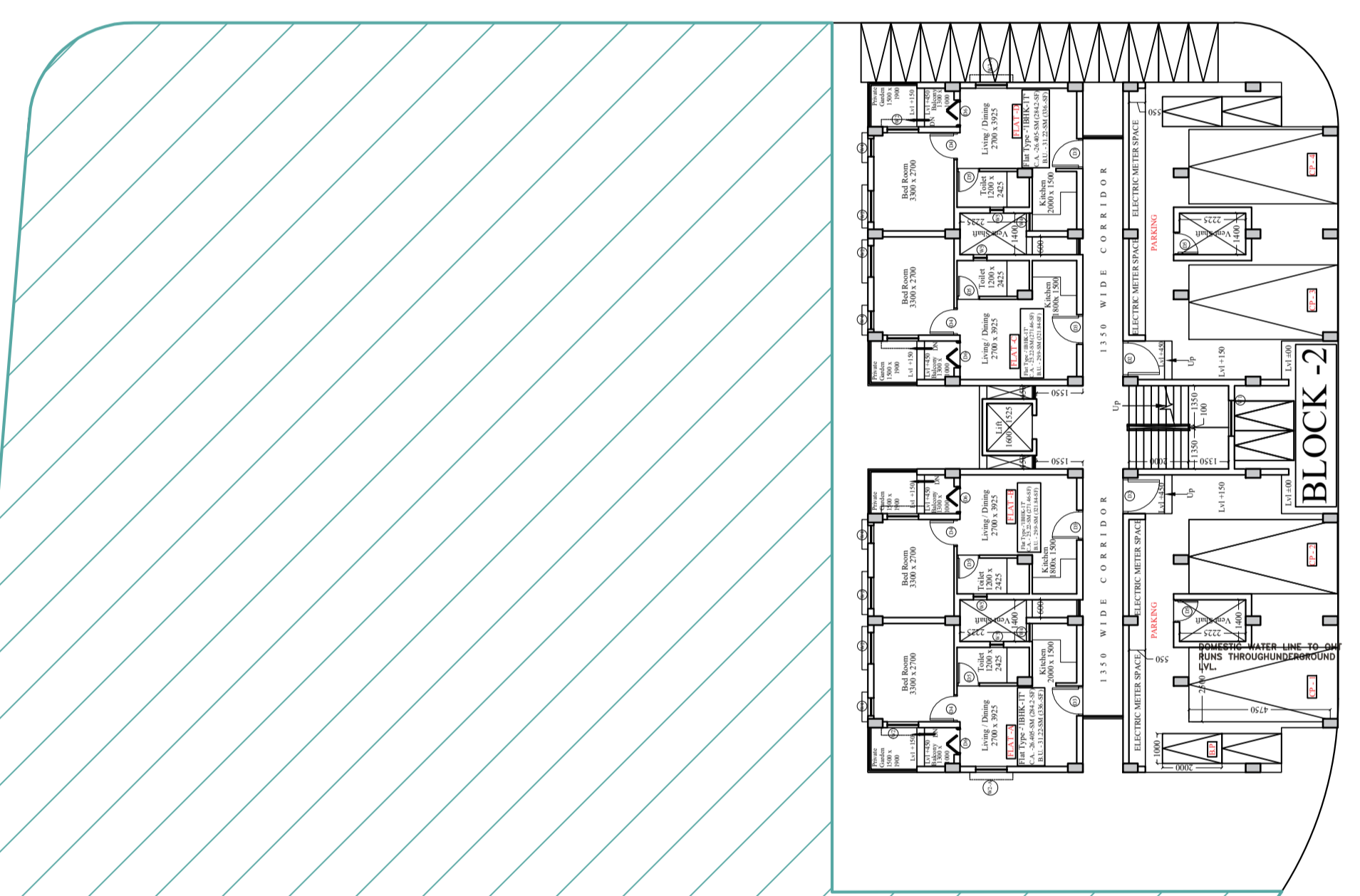
- SHOP 1
- SHOP 2
- SHOP 3
- SHOP 4
- SHOP 5
- SHOP 6
- SHOP 7

10 M WIDE ROAD

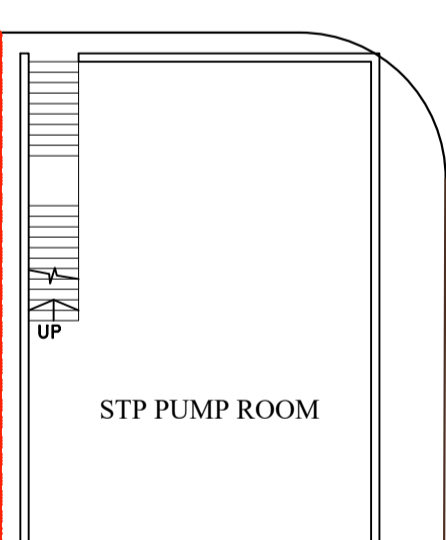
- TRANS - FORMER (630 KVA)
- TRANS - FORMER (630 KVA)
- SWITCH GEAR
- 5
- 6
- 7
- 8
- 9
- 10
- 11
- 12
- 13
- 14
- 15
- 16
- 17
- 18
- 19
- 20
- 21
- 22
- 23
- 24
- 25



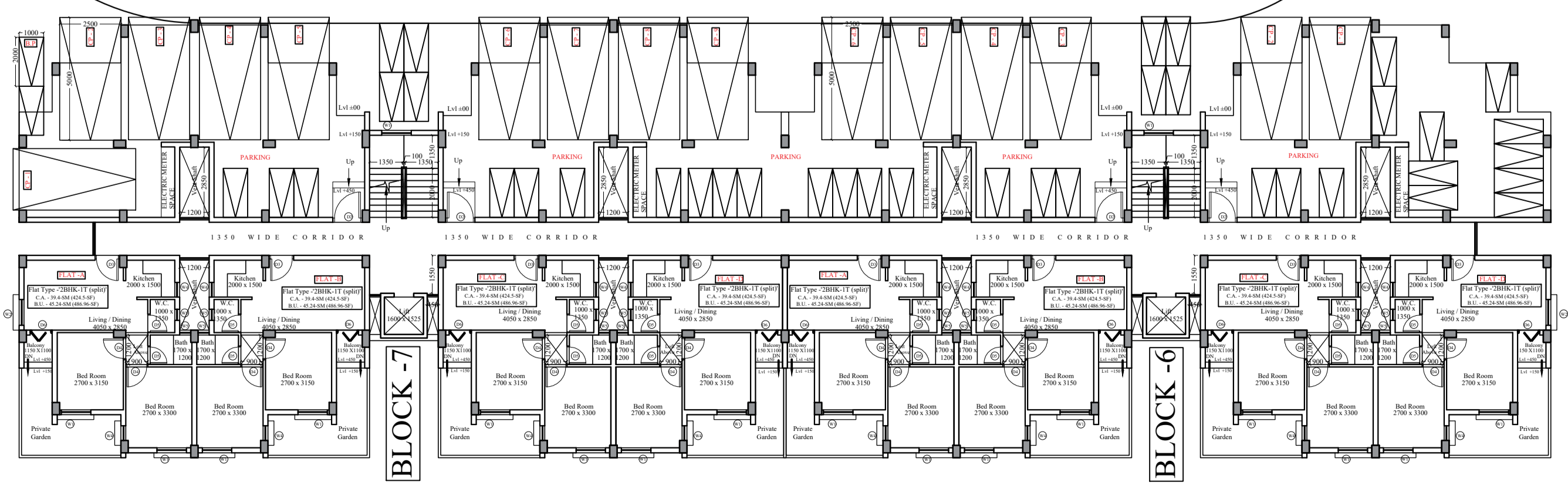
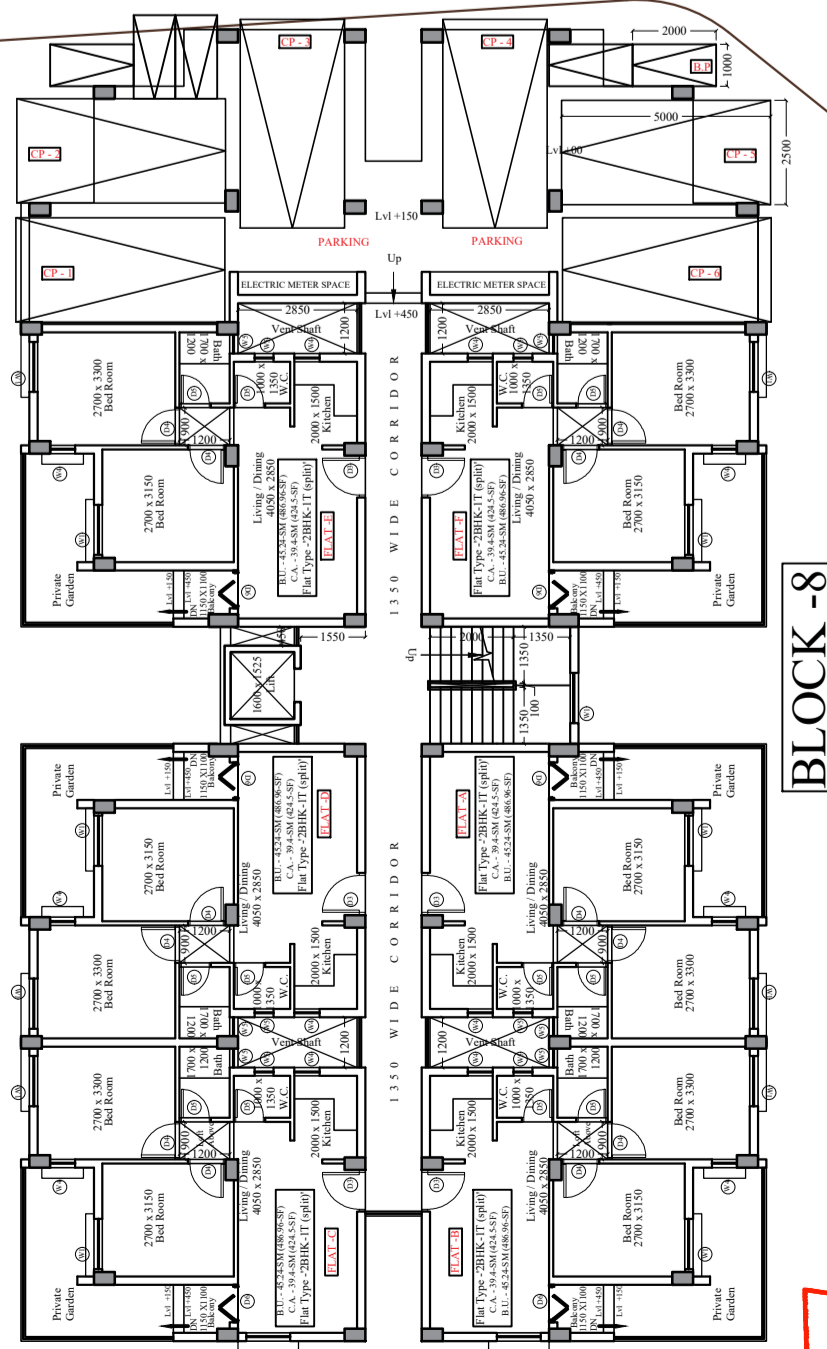
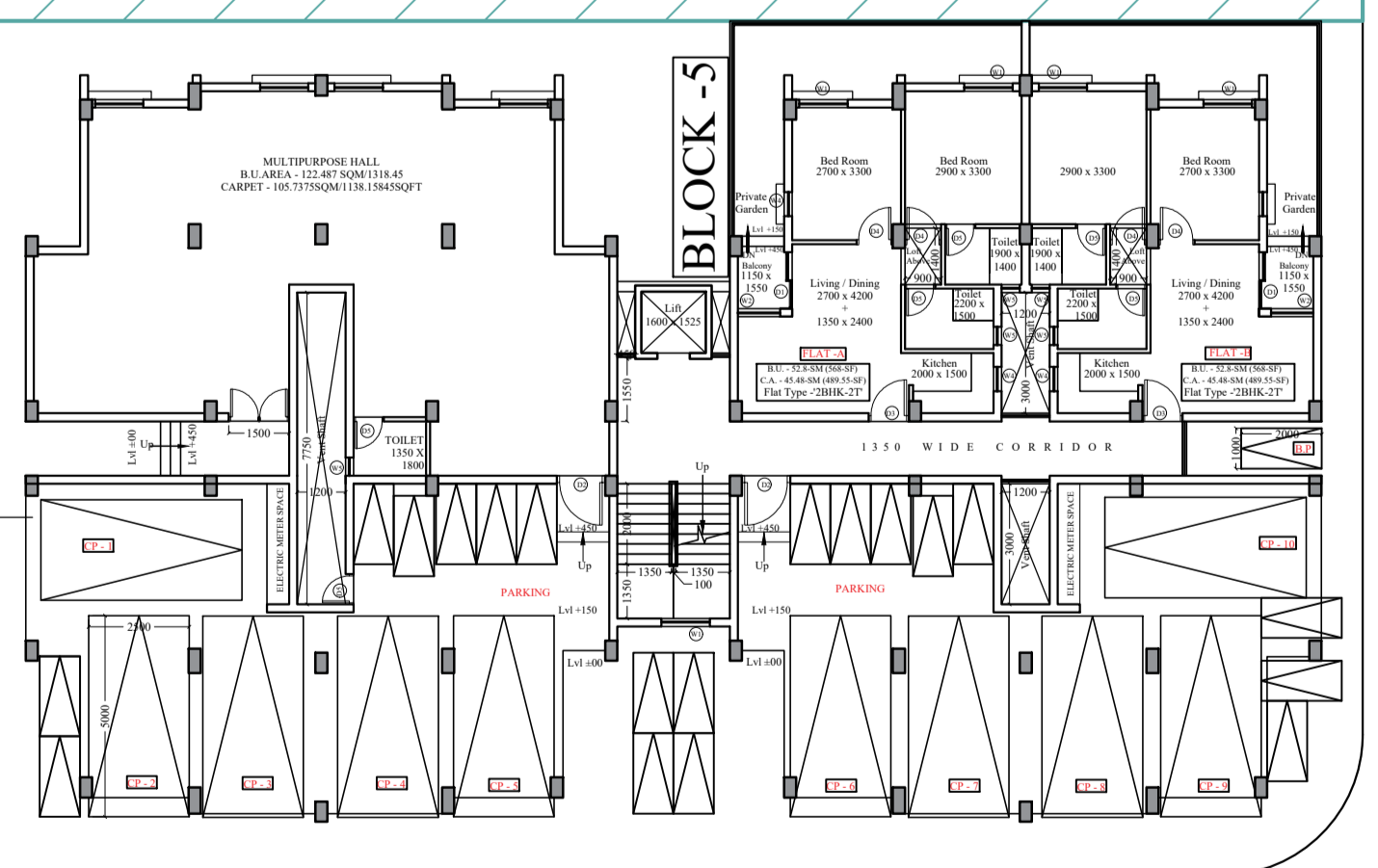
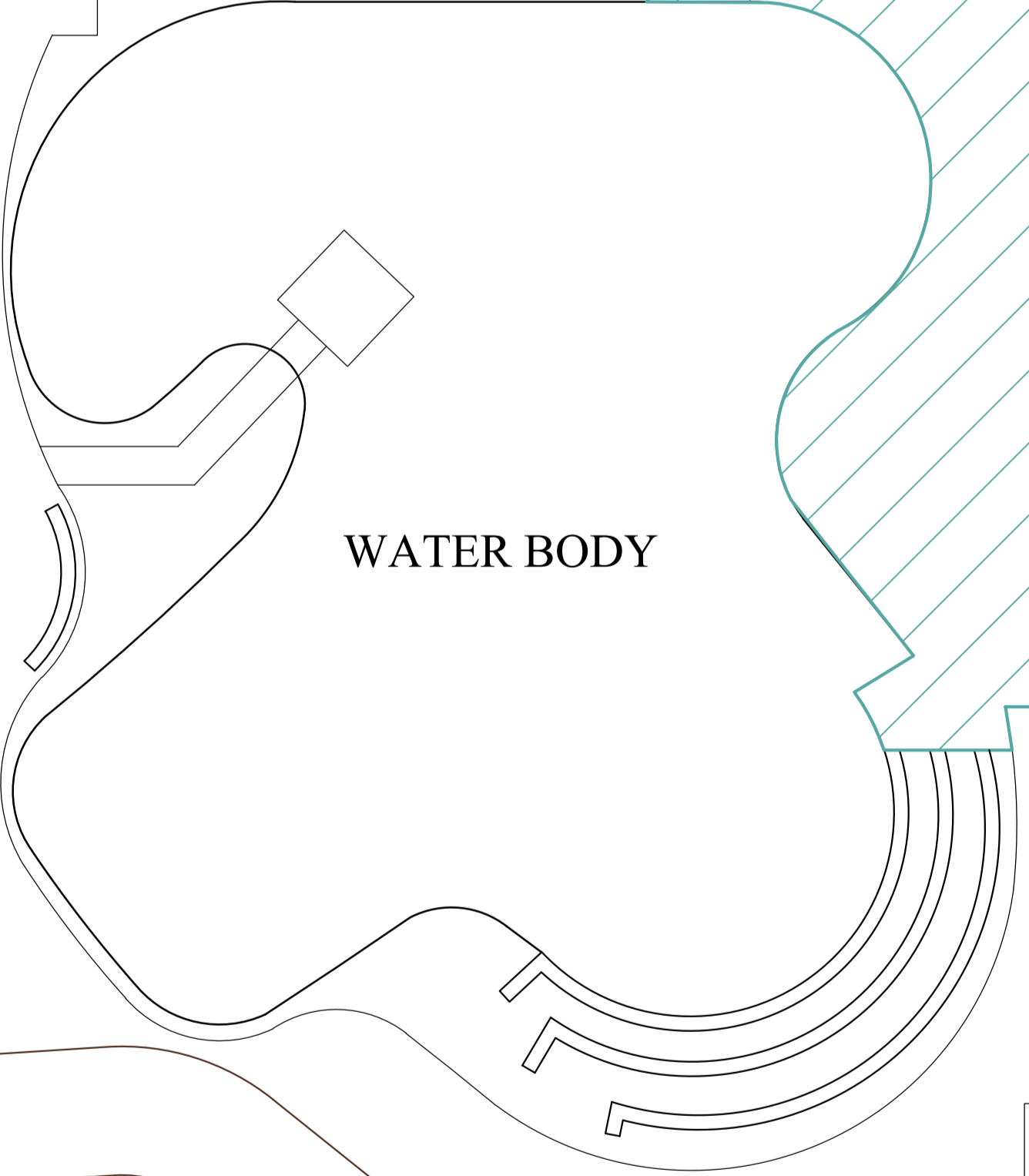
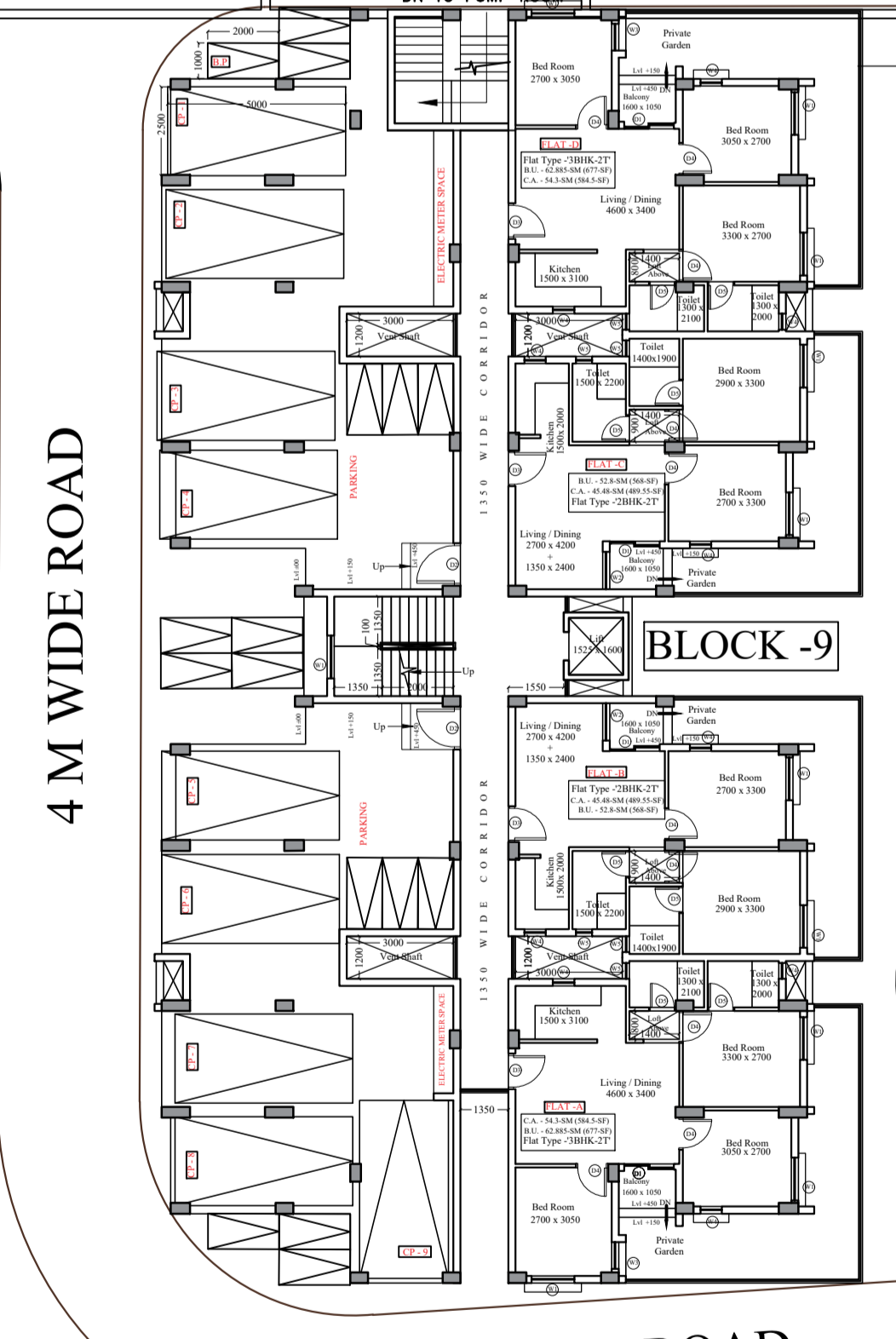
10 M WIDE ROAD



- FIRE WATER TANK CAPACITY - 50KLD
- FIRE WATER TANK CAPACITY - 50KLD
- PUMP ROOM
- U.G.R DOMESTIC WATER TANK CAPACITY - 112 KLD



PROPOSED LOCATION FOR 134 KLD STP



FIRE EVACUATION PLAN